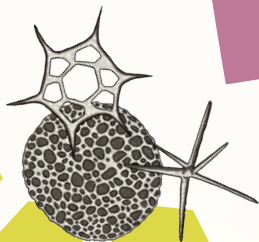


**LIFE** ON THE  
**EDGE**



**VIDA** AL  
**LÍMITE**



# Life is all around us, hidden in plain sight.

Explore extreme environments on Earth and gain perspective about the possibilities of life in our Solar System and beyond. Explore a microbial colony, navigate a rover, and use light to reveal faraway planets.

## SIZE

1,800-2,500 sf

## SHIPPING

Inbound only | 1 truck

Accompanied by technical manual, educational materials, and marketing kit

*Life on the Edge was produced by the Sciencenter in partnership with SPIF, and was made possible with generous support from NASA*

## LEARNING GOALS

- ◆ Astrobiologists study Earth to help them in the search for life in space
- ◆ Life is a dataset of 1—discovering life in space could change how we feel about our world
- ◆ Using new tools and technologies, we could discover habitable planets outside of our Solar System



## Sciencenter Traveling Exhibitions

- ◆ [travelingexhibitions@sciencenter.org](mailto:travelingexhibitions@sciencenter.org)
- ◆ 607-272-0600 x128
- ◆ [www.sciencenter.org/rentals](http://www.sciencenter.org/rentals)